

ROSE PRECISION

SPHERICAL BEARINGS

ROD ENDS

ground track

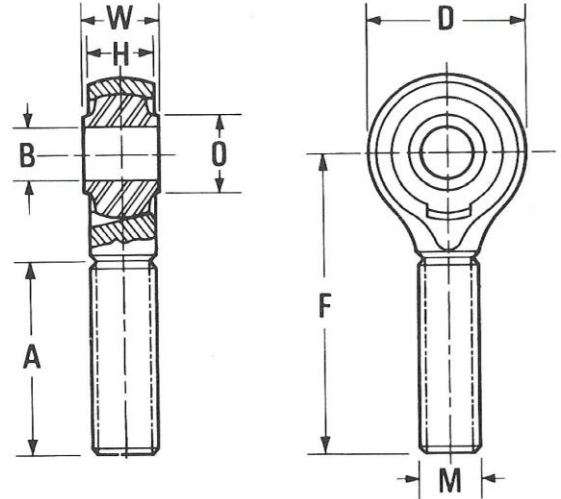
SPECIFICATION

HOUSING NICKEL CHROMIUM MOLYBDENUM STEEL, HEAT TREATED TO 80/90 TONS TENSILE (EN25, KE805 OR EQUIVALENT).

FINISH BLACK ENAMEL EXCEPT ON BEARING SURFACE, FACES AND THREAD.

BALL ONE PER CENT CARBON CHROMIUM STEEL (EN31 OR EQUIVALENT) HEAT TREATED TO 60/62 ROCKWELL 'C'.

ALL DIMENSIONS GIVEN IN INCHES.



RBJ series male thread long shank

BEARING NUMBER	B	W	H	O	D	F	A	M		Ball Diameter	Maximum Static Load in Pounds Approx.	Weight in Pounds Approx.
	Bore	Ball Width	Housing Width	Ball Flat Diameter	Head Diameter	Centre Length	Thread Length	Medium Fit				
	+0.0025 -0.0025	+0.000 -0.005	+0.005 -0.005		+0.010 -0.010	+0.010 -0.010	+0.010 -0.010	BSF	Hand			
RBJ 67	.250	.375	.320	.375	.812	1.625	.937	$\frac{5}{16}$	RH	.625	2,800	.057
RBJ 68	.250	.375	.320	.375	.812	1.625	.937	$\frac{5}{16}$	LH	.625	2,800	.057
RBJ 70	.312	.437	.375	.437	.937	1.875	1.125	$\frac{3}{8}$	RH	.720	4,400	.095
RBJ 71	.312	.437	.375	.437	.937	1.875	1.125	$\frac{3}{8}$	LH	.720	4,400	.095
FORGINGS	+0.0025 -0.0025	+0.000 -0.005	+0.005 -0.005		+0.030 -0.010	+0.010 -0.010	+0.010 -0.010					
RBJ 73	.375	.562	.480	.562	1.218	2.375	1.500	$\frac{1}{2}$	RH	.937	6,300	.217
RBJ 74	.375	.562	.480	.562	1.218	2.375	1.500	$\frac{1}{2}$	LH	.937	6,300	.217
RBJ 76	.500	.750	.640	.750	1.625	3.000	1.875	$\frac{5}{8}$	RH	1.250	11,200	.485
RBJ 77	.500	.750	.640	.750	1.625	3.000	1.875	$\frac{5}{8}$	LH	1.250	11,200	.485
	+0.0005 -0.0025	+0.000 -0.005	+0.005 -0.005		+0.030 -0.010	+0.010 -0.010	+0.010 -0.010					
RBJ 79	.625	.875	.750	.875	1.937	3.500	2.250	$\frac{3}{4}$	RH	1.437	17,500	.690
RBJ 80	.625	.875	.750	.875	1.937	3.500	2.250	$\frac{3}{4}$	LH	1.437	17,500	.690
RBJ 82	.750	.875	.812	1.000	2.125	4.000	2.625	$\frac{7}{8}$	RH	1.500	25,000	.880
RBJ 83	.750	.875	.812	1.000	2.125	4.000	2.625	$\frac{7}{8}$	LH	1.500	25,000	.880

All rod ends having a bore greater than $\frac{1}{2}$ " are fitted with lubricators.

For further information refer to Technical index.